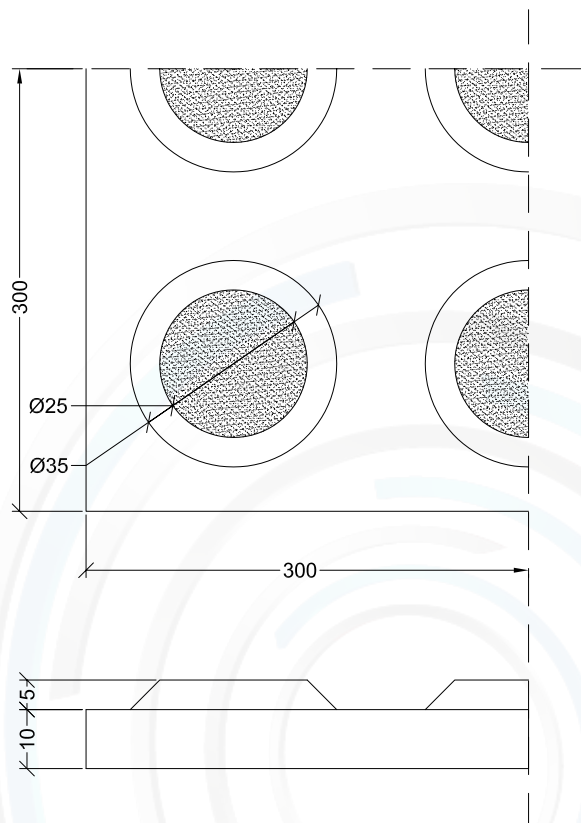


## Integrated Tactile Ground Surface Indicators.

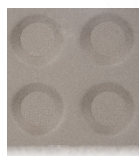
Group	TSA Warning Integrated TGSI
Subgroup	Warning Indicator TGSI Ceramic
Material.	Ceramic Tile
Substrates.	Concrete, Bitumen, Tiles, Vinyl, Rubber, Carpet
AS Standards.	Manufactured to AS/NZS 1428.4 .1 2009

## Slip Resistance Testing.

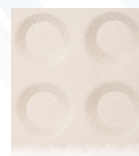
Test.	Test in accordance with AS/NZS 4586
Type.	Wet Pendulum Test.
Results	P4 = 40 - 44 : "In-Line with R11/B ref SA HB 198:2014"
Report By	Sliptest Australia Pty Ltd - NATA Accredited



## TSA - Colours & Codes.



Charcoal



Ivory



Yellow

Colours.	Product Code
Charcoal	WICE-30X30-TSA-CHA
Ivory	WICE-30X30-TSA-IVO
Yellow	WICE-30X30-TSA-YEL
Other Colour available on request	

## Tactile Systems Australia Pty Ltd

### Postal Address:

PO Box 607  
HELENSVALE  
QLD 4212

### Physical Address:

6/168 Siganto Drive  
HELENSVALE  
QLD 4212

07 5580 6993

07 5580 6994

[sales@tactilesystems.com.au](mailto:sales@tactilesystems.com.au)

[www.tactilesystems.com.au](http://www.tactilesystems.com.au)