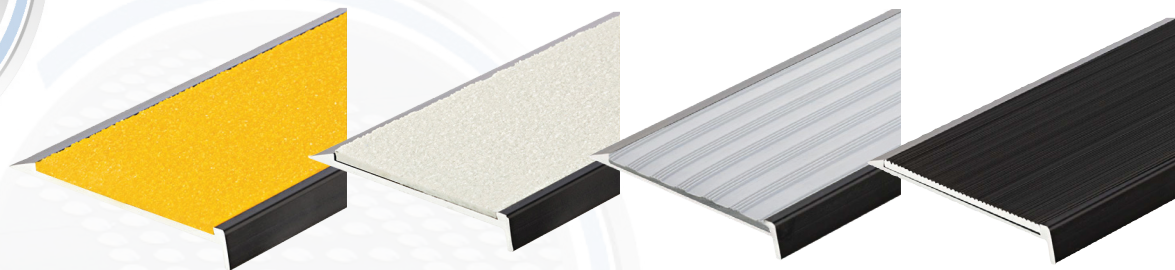


# Surface Mount Stair Nosing

## Classic 2 Series - Black Anodised

Surface Mount

Stair Nosing



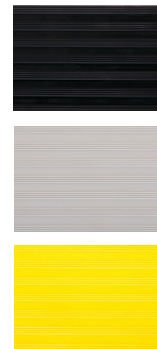
### P5 TAPE



### P5 FIBRE-REINFORCED



### P5 POLY



### ALUMINIUM INSERT



### P5 TAPE SPECIFICATIONS

Black	CS2-75X10-BTI-BLK
Grey	CS2-75X10-BTI-GRY
Yellow	CS2-75X10-BTI-YEL
White	CS2-75X10-BTI-WHI
Lumo	CS2-75X10-BTI-LUM
Black/Lumo	CS2-75X10-BTI-BLK&GLD

### P5 FIBRE- REINFORCED SPECIFICATIONS

Black	CS2-75X10-BSG-BLK
Grey	CS2-75X10-BSG-GRY
Yellow	CS2-75X10-BSG-YEL
White	CS2-75X10-BSG-WHI

### P5 POLY SPECIFICATIONS

Black	CS2-75X10-BPI-BLK
Grey	CS2-75X10-BPI-GRY
Yellow	CS2-75X10-BPI-YEL

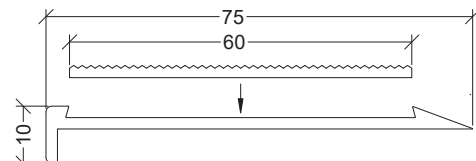
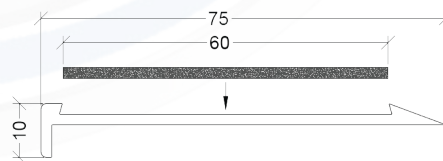
### ALUMINIUM INSERT SPECIFICATIONS

Black	CS2-75X10-BAI-BLK
Clear	CS2-75X10-BAI-CLR
Brass	CS2-75X10-BAI-BRC

**Tactile Systems Australia** Classic Series 2 range of black anodised stair nosing is the ideal product for a wide range of applications.

Designed to comply with AS-1428.1 2009 it features a long lasting aluminium construction paired with a choice of inserts – Aluminium Oxide tape insert, PVC Poly Insert and Fibre-Reinforced Infill, or Aluminium insert. – all with P5 slip rating. Inserts are available in a range of colours to meet luminance contrast requirements, as well as giving a range of design options.

Suitable for indoor or outdoor applications, Classic Series stair nosing has been on some of Australia's most iconic construction projects.



AS/NZ 1428.1 2009  
STANDARD



P5 SLIP RATING NATA  
APPROVED LAB



2 YEAR PRODUCT  
WARRANTY



STD LENGTH 3.65 L/M  
CUT & INSTALL AVAILABLE



REQUIRES 30%  
LUMINANCE CONTRAST  
Testing Service Available