

Braille Signs



Braille Signs

Building Code of Australia Signage

The Building Code of Australia requires every building to have accessible, clear and legible braille and tactile signage that offers those with visual impairments the ability to access and use facilities in a dignified way.

Technical Information:

Our range of braille signs are made using UV stable textured impact resistant acrylic and are suited to indoor and outdoor environments.

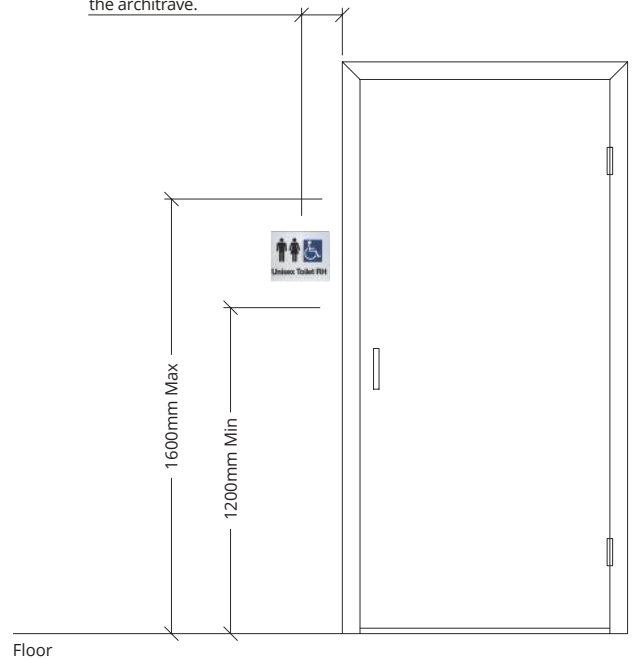
Our braille and tactile signage range are made to conform to Australian standards, the Building Code of Australia guidelines and the Australian Braille Authority criteria.



Signs with single lines of characters must have the line of tactile characters between 1250mm and 1350mm above the floor or ground surface.

Floor

Leading edge to be between 50mm and 300mm from the architrave.



Floor



AS/NZ Standard

This range of Braille signs comply with the AS/NZS 1428.1:2009 Design for access and mobility Part 1: General requirements for access.



Warranty

These products come with a 2 Year product warranty and 1 year warranty on installations where the product is used under normal conditions.