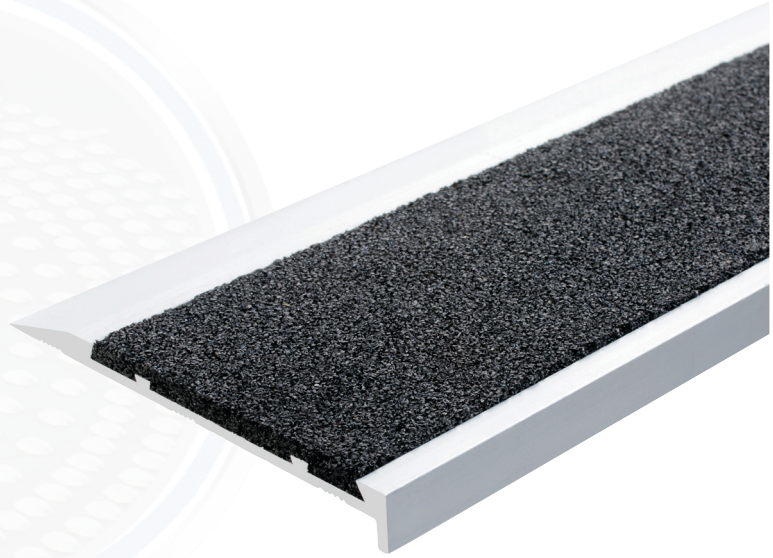
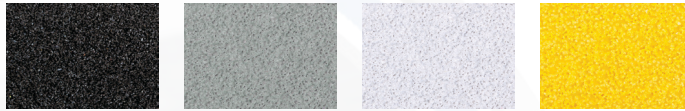


Surface Mount Stair Nosing

Select Series 1 - Clear Anodised



CARBORUNDUM COLOUR VARIATIONS



AS/NZ 1428.1 2021
STANDARD



P5 SLIP RATING NATA
APPROVED LAB



2 YEAR PRODUCT
WARRANTY



STD LENGTH 3.65 L/M
CUT & INSTALL AVAILABLE



REQUIRES 30%
LUMINANCE CONTRAST

Tactile Systems Australia Select Series 1 Surface Mount stair nosing features clear anodised aluminium matched with a high-grade carborundum insert.

Designed to comply with AS-1428.1 2021, it features high grade aluminium construction with a carborundum insert. A P5 slip rating from a NATA approved laboratory, tested to AS 4586

Available in Black, Yellow, Grey and White insert to provide designer options, as well as providing a solution for various colour and types of substrates – enabling compliance with the 30% colour contrast required under the standard.

This type of Select Series nosing is surface mounted, suitable for indoor or outdoor applications. It can be used for new construction, as well as retrofit requirements.

Surface Mount Select Series 1 - Clear Alloy

Colour	Carb Infill
Black	SC1-75X10-BLK
Grey	SC1-75X10-GRY
Yellow	SC1-75X10-YEL
White	SC1-75X10-WHI

