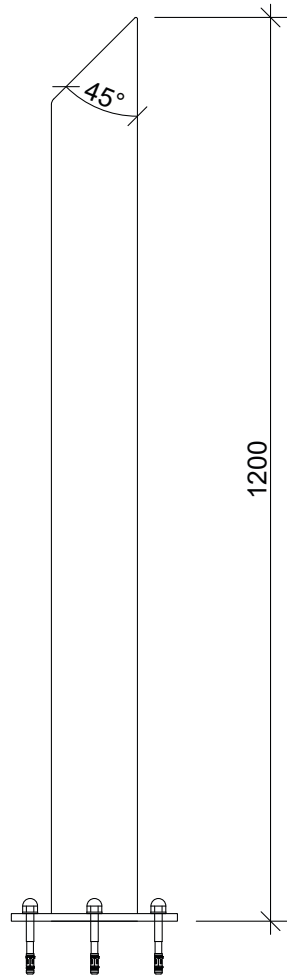


Car Park Fixtures

Surface Mount Bollard with Beveled welded top - Stainless Steel

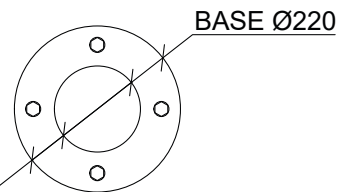


Tactile Systems Australia flat top, stainless steel bollards are ideal for protecting both people and property.

Our stainless-steel bollards are manufactured from 316 grade stainless steel, and then polished.

These bollards are suitable for indoor or outdoor applications, and their high-quality finish make them ideal for high grade or designer architectural applications.

These bollards are surface mounted via a fully welded mounting plate with 4 fixing points. Fixings are also available for purchase.



1 YEAR PRODUCT WARRANTY



INSTALLATION SERVICE AVAILABLE

SPECIFICATIONS

Bollard Size	Colour	Code	Weight
114mmØ x 1200mm	Stainless Steel	BEV-114x1200-SS	12Kg



FIXINGS