

Car Park Fixtures

TSA Surface Mount Key Lockable & Removable - Yellow



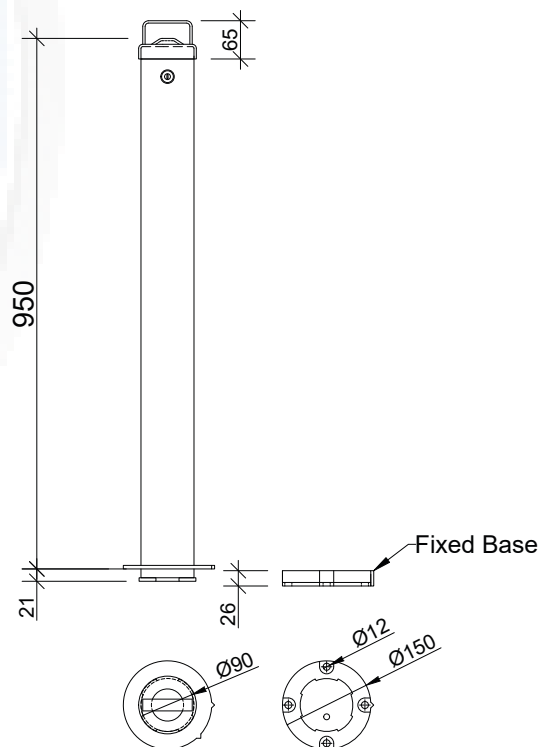
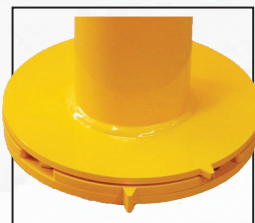
Removable surface mounted key lock bollards are easy to use and very convenient, use them when you need to protect your assets and then remove them with the handle on the cap for clear access.

Hot Dipped Galvanised Steel and powder coated for long term durability with a fully welded round base plate, the surface mount style with a metal cap installs easily, and is designed to be strong and durable.

This surface mounted bollard easily removes from its shoe / mounting plate by unlocking the bollard and simply turning the bollard out of its shoe.

Fixings for the mounting plate are hidden when the bollard is in place, ensuring security. Comes supplied with 2 x keys.

- Diameter: 90mm
- Height: 950mm
- Weight: 11kg
- Finish: Powder coated safety Yellow
- Wall Thickness: 3mm
- Base plate: 200mm diameter x 20mm high
- 4 mounting holes – Fixings available from Tactile Systems to suit various substrates



1 YEAR PRODUCT WARRANTY



INSTALLATION SERVICE AVAILABLE

SPECIFICATIONS

Bollard Size

950mm x 90mm

Code

BSMKL-950-YEL